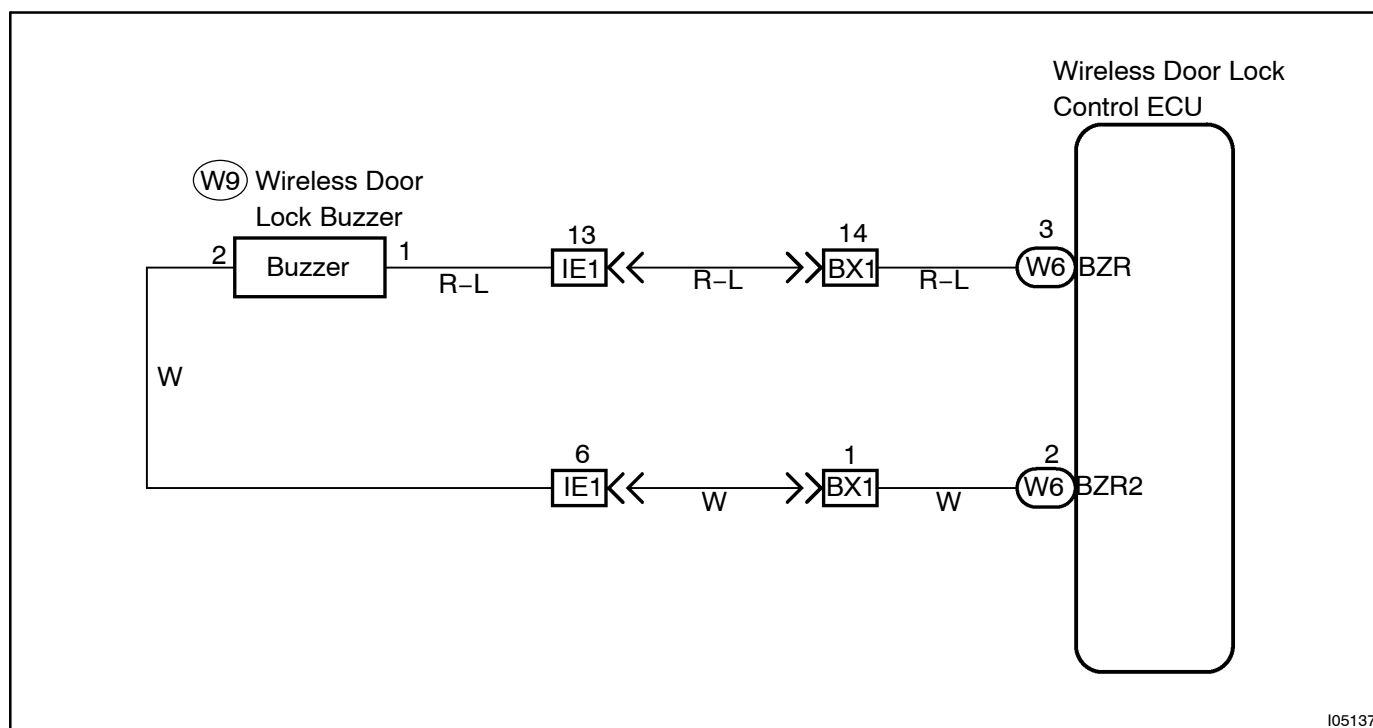


Wireless Door Lock Buzzer Circuit

CIRCUIT DESCRIPTION

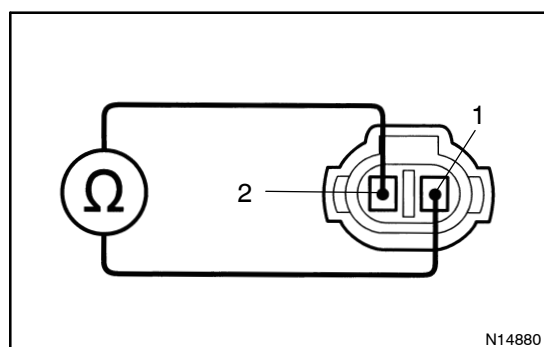
The volume of the buzzer can be controlled or turned OFF by the volume switch.

WIRING DIAGRAM



INSPECTION PROCEDURE

1	Check wireless door lock buzzer.
---	----------------------------------



PREPARATION:

Remove wireless door lock buzzer.

CHECK:

Measure resistance between terminals.

OK:

Approx. : 1 kΩ

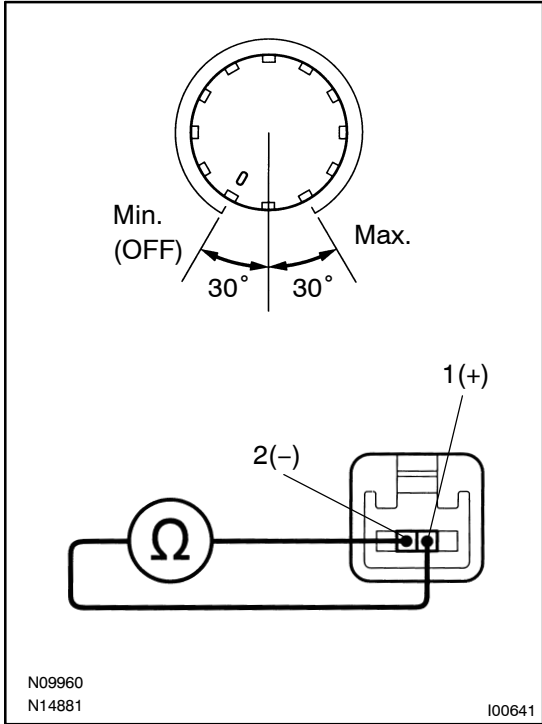
NG

Replace wireless door lock volume.

OK

2

Check wireless door lock volume.



PREPARATION:

Remove wireless door lock volume.

CHECK:

Measure resistance between terminals.

OK:

OFF position: $\infty \Omega$

Min. position: 10 k Ω

Max. position: 0

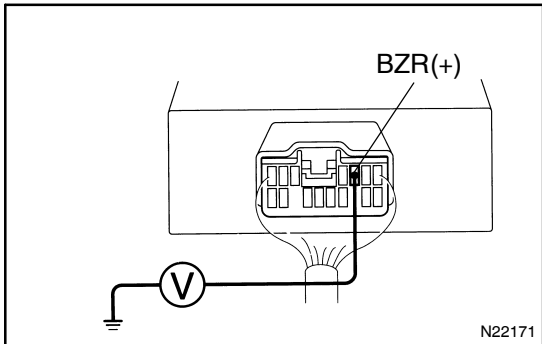
NG

Replace wireless door lock volume.

OK

3

Check voltage between terminal BZR of wireless door lock ECU connector and body ground.



PREPARATION:

Remove the wireless door lock ECU from No.1 instrument panel brace.

CHECK:

Measure signal between terminal BZR and body ground, when transmitter is ON and OFF.

OK:

Door Lock position	Lock	Unlock
Signal	<p>Once signal</p> <p>0.13 sec.</p>	<p>Twice signal</p> <p>0.13 sec.</p> <p>0.25 sec.</p>

NG**Replace wireless door lock ECU.****OK**

Check and repair harness and connector between ECU and volume, volume and buzzer, buzzer and ECU.